

State Institution “Main State Inspectorate for Seed Breeding, Quarantine and Plant Protection”

**Preventing entry of the Emerald ash borer (*Agrilus planipennis*) into the
Republic of Belarus: Safeguarding Belarusian ash trees**

Darya Straltsova

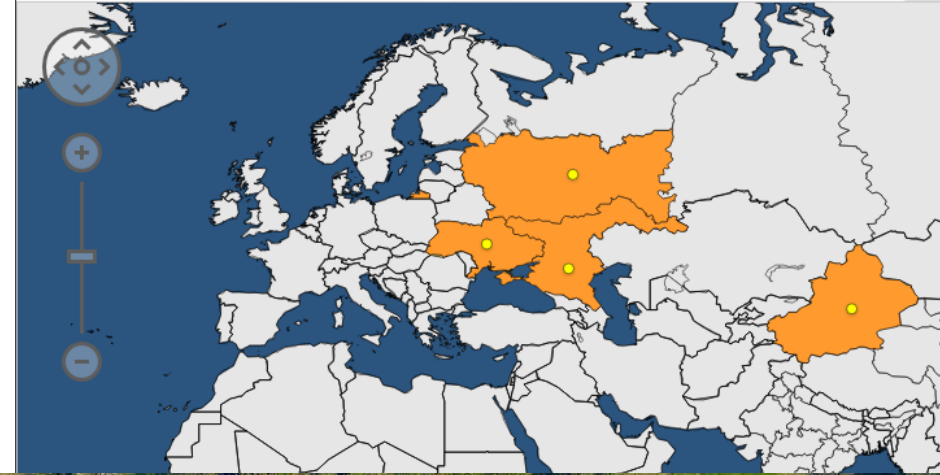
Lead Specialist of the Department of Quarantine Expertise and Methodological Work

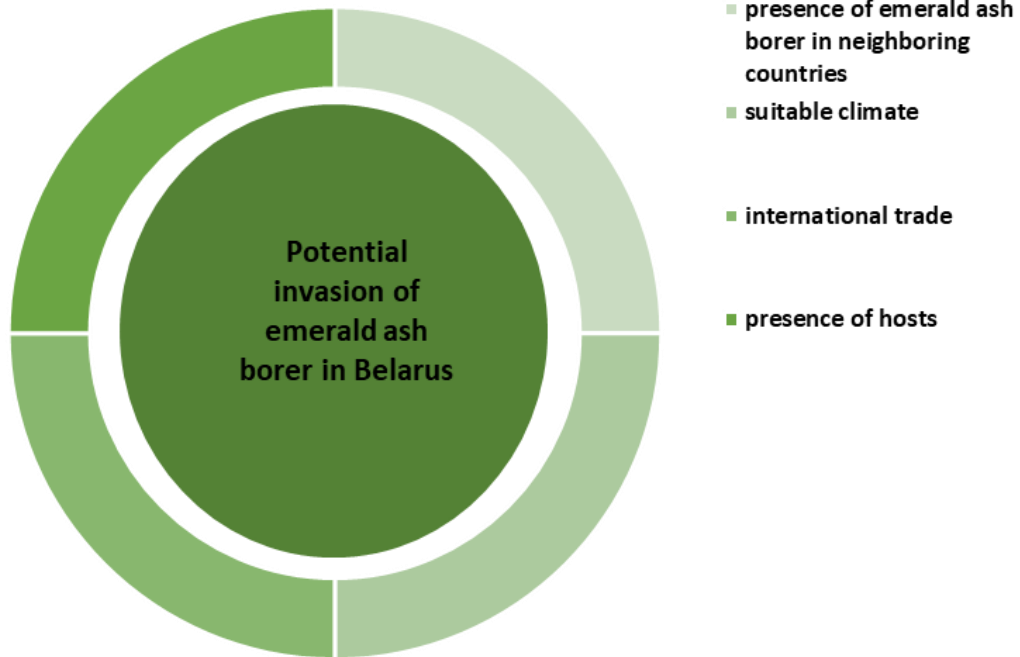
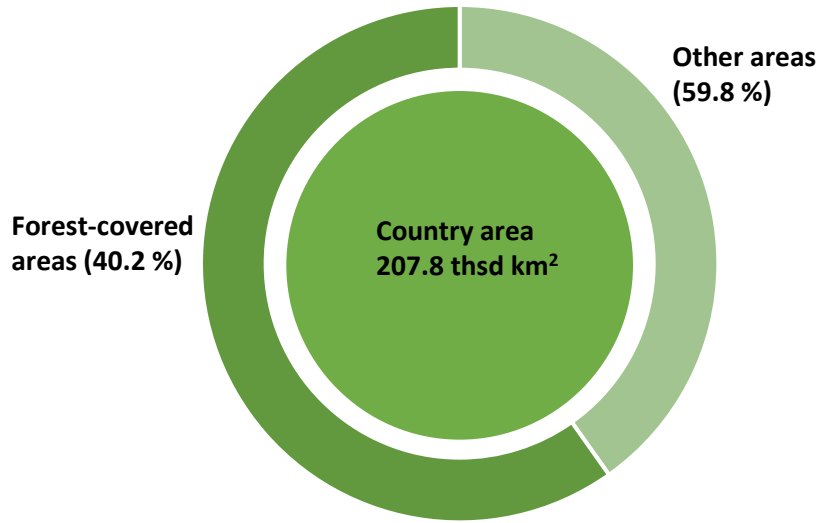
Minsk, Belarus

The emerald ash borer (*Agrilus planipennis* Fairmaire) is currently spreading in European Russia and Ukraine.

As of now, *Agrilus planipennis* has not been detected in Belarus.

The emerald ash borer was well established up to 60-70 km and 180 km of the Belarusian borders (Smolensk and Bryansk).





More than 40 % of the Belarusian territory is covered by forests.

There is now 13 482 ha of ash plantations (at 1 January 2024), which is 0.16 % of forested area.

Compared to the same period last year, this area decreased by 2.8 %.

The main biotic factor that negatively affect the state of ash plantations in 2023 was Armillaria root rot.

The average age of ash stands is 58 years.



Inspection of consignments of regulated articles that allows the entry or spread of *Agrilus planipennis*

Goods are imported to the Republic of Belarus:

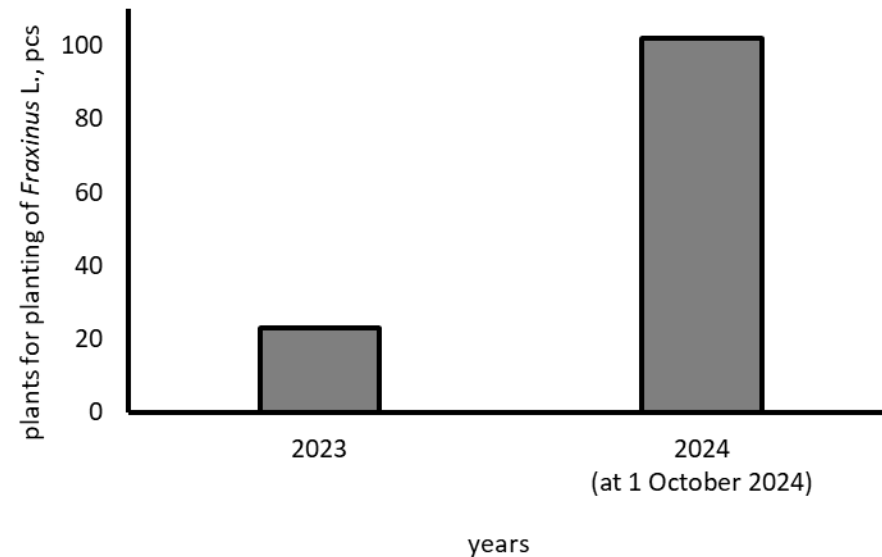
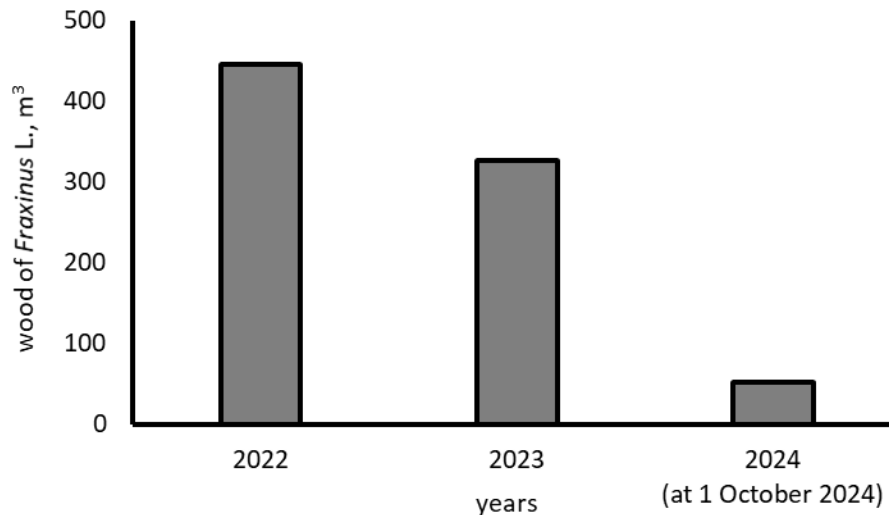
- ash wood
- plant for planting of *Fraxinus* L.
- ISPM 15-marked WPM with an ash component

Goods are exported from the Republic of Belarus:

- plant for planting of *Fraxinus* L.
- ash wood
- ISPM 15-marked WPM with an ash component

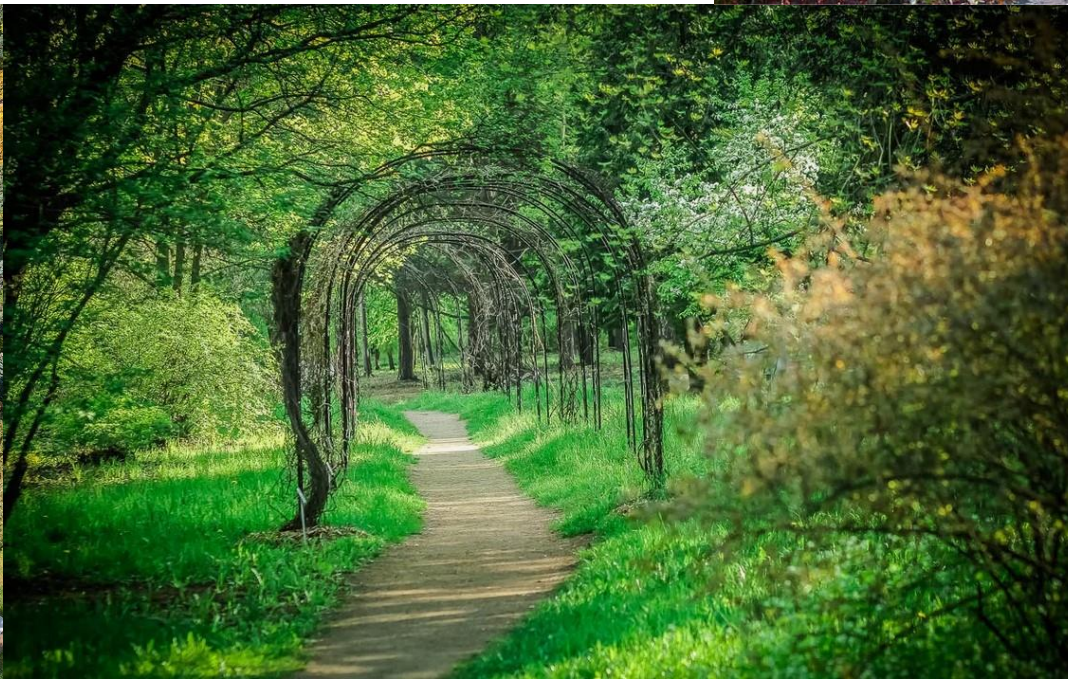
The insect is **inadvertently** spread by people and vehicles.

Changes in ash wood import to Belarus



Monitoring of Emerald ash borer

- parks, urban green spaces
- plant nurseries
- wood chip burning power plants
- woodworking enterprises
- green spaces along the roads, railways
- forests, forests edges, stands of declining ash trees (together with the state institution for forest protection and monitoring “Bellesozashchita”)
- forestry enterprises and legal entities engaged in forestry or landscaping





Identify roles and responsibilities

Review and update the action plan



Determine the completion of official action



Review the measures in case of prolonged official action



Action plan

Criteria to implement the action plan



Management response



Official actions after final confirmation



In the event of a finding of *Agrilus planipennis* ...

New report of a pest or a pest outbreak (results of phytosanitary inspections of the NPPO and forest pathology surveys of “Bellesozashchita”, legal entities engaged in ash cultivation, public etc.)

Verification of the data obtained from sources of information by NPPO – Upon suspicion of *Agrilus planipennis*, the authorities will conduct surveys to confirm the presence of the pest (PM 7/154 (1) *Agrilus planipennis*, Guidelines for detection, localization, elimination of outbreaks of extension of *Agrilus planipennis* (Republic of Belarus))

Establishment of quarantine areas and buffer zones

The establishment of a **3-year quarantine** (local executive and administrative authorities)

Pest Control Measures: Implementing measures such as insecticide treatments for infested trees, removal and destruction of heavily infested trees, or other control methods.

Regulating Movement of Host Materials: Prohibiting or controlling the transport of ash trees and related materials within and out of affected areas to minimize the risk of spreading the pest.

The NPPO **informs** legal entities and individuals, including individual entrepreneurs, carrying out economic and other activities in the quarantine zone, about the establishment of a quarantine zone with the introduction of a quarantine regime in the relevant territory, and liability for its violation.

The outbreak is considered **eliminated** if the fact of absence of the quarantine pest for 3 years is established

Thank you for your attention